

DOUBLE SPACER

TECHNICAL SPECIFICATION



DOUBLE SPACER TECHNICAL SPECIFICATION

Omer's Double Spacer is a versatile and robust car lift can manage up to four cars at one time. The system uses a pit to allow easy removal of cars from the lower platform, without moving the vehicles parked on the upper platform. The Double Spacer is packed full of technical innovations, making it one of the highest quality, safest parking platforms available anywhere in the world. It's also extremely versatile, allowing asymmetrical positioning of even just two cars on different platforms.

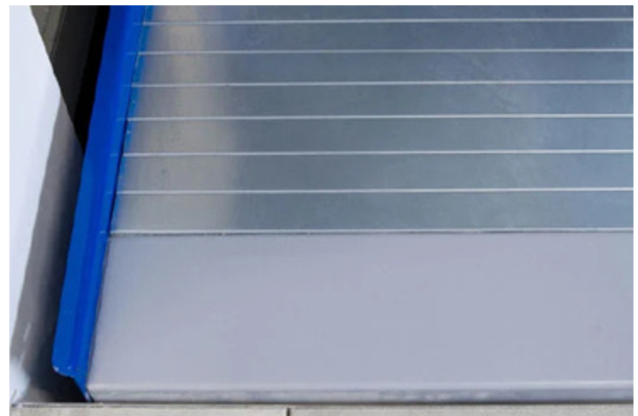
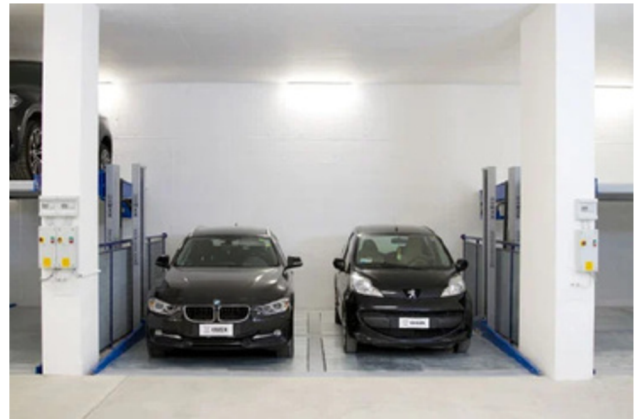
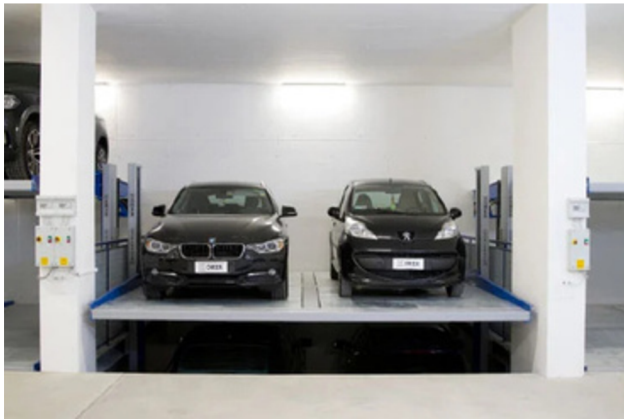
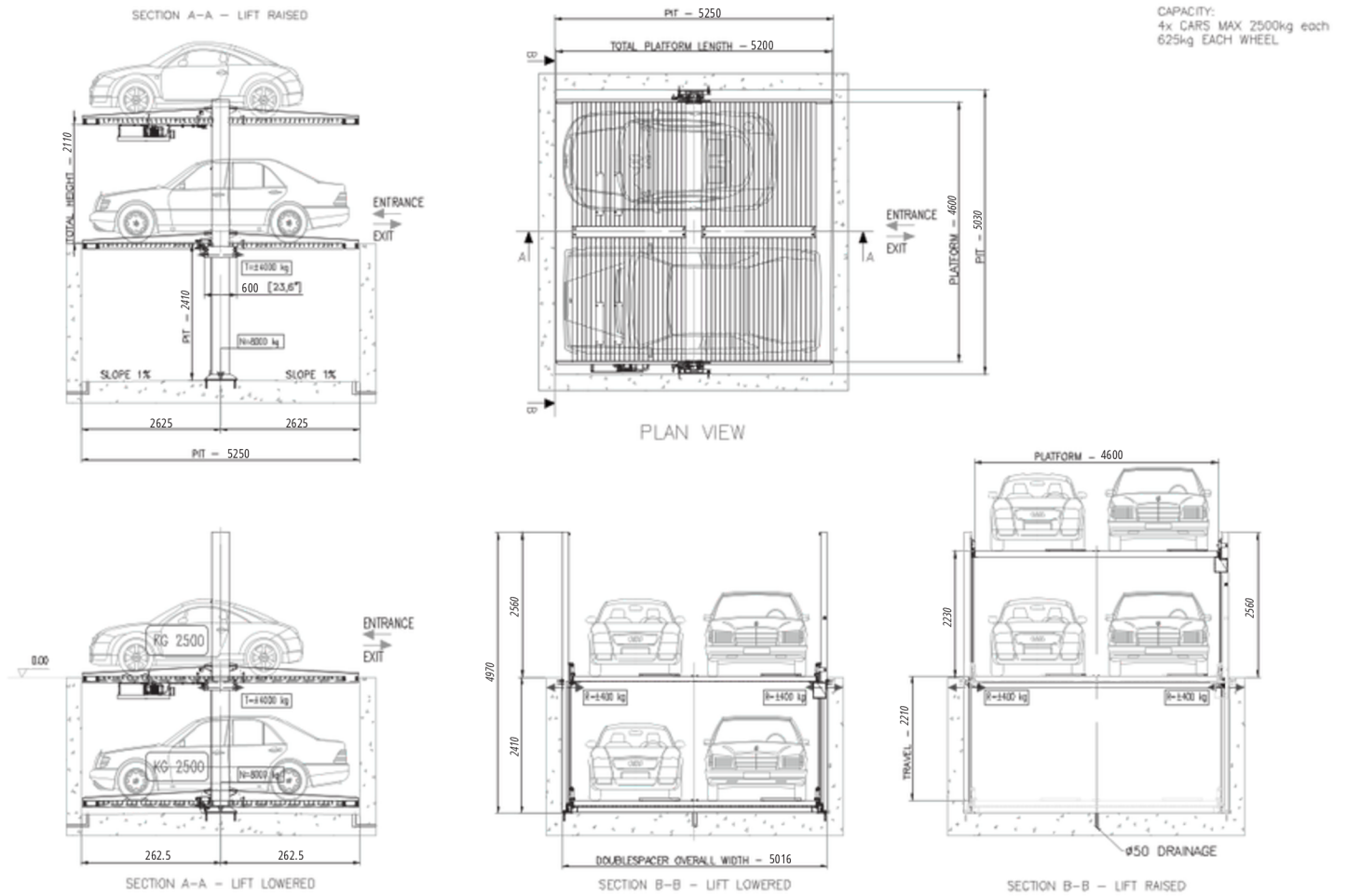
SPECIFICATION TABLE

	Capacity	Standard Lifting Height	Standard Platform	Net Height	Pit	Power	Ascent / Descent time	Power supply	Standard Weight
DOUBLE SPACER 46/52	2x 2,500 kg	1,910 mm	4,600 mm x 5,200mm	1,810 mm	2,110 mm	3 kw	64s / 64s	400 v / 50 hz	3,950 kg
DOUBLE SPACER 48/52	2x 2,500 kg	1,910 mm	4,800 mm x 5,200 mm	1,810 mm	2,110 mm	3 kw	64s / 64s	400 v / 50 hz	4,050 kg
DOUBLE SPACER 50/52	2x 2,500 kg	1,910 mm	5,000 mm x 5,200 mm	1,810 mm	2,110 mm	3 kw	64s / 64s	400 v / 50 hz	4,150 kg
DOUBLE SPACER 52/52	2x 2,500 kg	1,910 mm	5,200mm x 5,200 mm	1,810 mm	2,110 mm	3 kw	64s / 64s	400 v / 50 hz	4,250 kg
DOUBLE SPACER 46/52 -21	2x 2,500 kg	2,210 mm	4,600 mm x 5,200mm	2,110 mm	2,400 mm	3 kw	64s / 64s	400 v / 50 hz	3,950 kg
DOUBLE SPACER 48/52 -21	2x 2,500 kg	2,210 mm	4,800 mm x 5,200 mm	2,110 mm	2,400 mm	3 kw	64s / 64s	400 v / 50 hz	4,050 kg
DOUBLE SPACER 50/52 -21	2x 2,500 kg	2,210 mm	5,000 mm x 5,200 mm	2,110 mm	2,400 mm	3 kw	64s / 64s	400 v / 50 hz	4,150 kg
DOUBLE SPACER 52/52 -21	2x 2,500 kg	2,210 mm	5,200mm x 5,200 mm	2,110 mm	2,400 mm	3 kw	64s / 64s	400 v / 50 hz	4,250 kg

* Height between platforms can be varied between 1800mm and 2110mm please contact HLS for specific details

For enquiries please contact us at info@hlsequipment.com

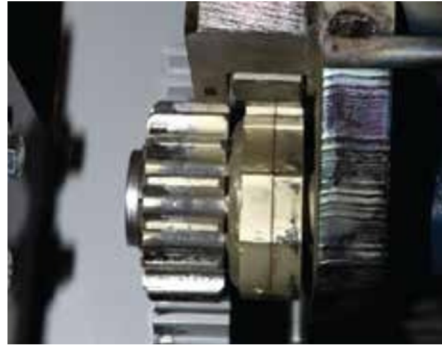
DOUBLE SPACER 46/52 -21



For enquiries please contact us at info@hlsequipment.com



A hydraulically operated mechanical block located at the top of the column ensures platform safety at all times.



The torsion bar is equipped with 2 pinion gears at each end. On each end the outer pinion will slide the bar on the rack while the inside pinion is part of the locking mechanism for safety purposes.



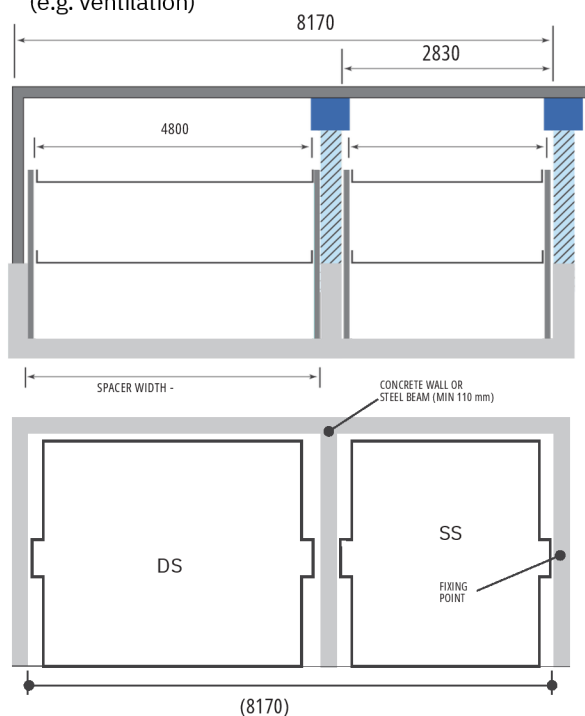
A steel safety gear, electrically interlocked rests on the internal toothed pinion which will lock the platform in the event of sudden release of the button or movement.

INSTALLATION DATA



Free space for longitudinal and vertical ducts (e.g. ventilation)

Free space for longitudinal and vertical ducts (e.g. ventilation)

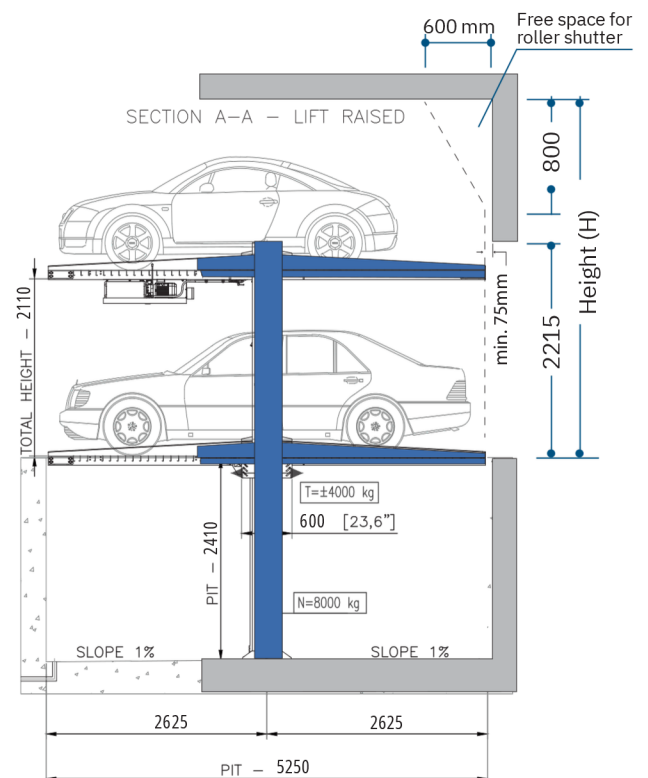


WIDTH ALLOWANCES BASED ON 2400mm WIDE
USEABLE PLATFORMS

Combinations	Total no. of car spaces	Total width including intermediate Structural Beams
1 x SS	2	2830
1 x SS; 1 x DS	6	8170
1 x SS; 2 x DS	10	13510
2 x SS; 2 x DS	12	16450
3 x DS	12	15910
1 x SS; 4 x DS	18	24190
1 x SS; 5 x DS	22	29530

ABBREVIATIONS:
SS = Single Spacer
DS = Double Spacer

ALLOWANCES:
2400 mm Single Platform - 2830 mm
4800 mm Double Platform - 5230 mm
Between Systems - 110 mm Structural



FLOOR TO CEILING HEIGHT ALLOWANCES

System Height Size	Floor to Ceiling Height	Lower Maximum Car Height	Upper Maximum Car Height
1810mm Nett Height	3450	1800	1500
1810mm Nett Height	3600	1800	1650
1810mm Nett Height	3750	1800	1800
1810mm Nett Height	3900	1800	1950
2110mm Nett Height	3750	2100	1500
2110mm Nett Height	3900	2100	1650
2110mm Nett Height	4050	2100	1800
2110mm Nett Height	4200	2100	1950
2110mm Nett Height	4350	2100	2100

40 mm Clearance amount has been allowed for on the upper level

INCLUSIONS AND ACCESSORIES

■ STANDARD □ OPTIONAL

DESCRIPTION	DOUBLE SPACER	NOTES
Standard colours: BLUE RAL 5005 and / SILVER RAL 9006	■	
2 x columns complete with lifting cylinders	■	
2 x platform in galvanised plate	■	
1 x torsion bar	■	
1 x "dead man" push-button board	■	
Security control module for sensors and safety locks	■	
1 x hydraulic control unit with motor	■	
Power Supply: 415V/3Ph/50Hz	■	
Standard height H=1.800mm.	■	
Level locking mechanical devices	■	Optional heights of 100mm movements are possible through to 290
Mechanical and electrical safety devices	■	
Nylon Package	■	
Additional push button board	□	
Additional electro - magnetic sensor	□	
Flashing light	□	
Audible warning kit	□	
Two-colours tower light (Red / Green)	□	
Energy Saving Soft Start	□	
Emergency manual pump	■	
Back-up battery	□	
Waterproof galvanised cover for control unit for outdoor installation	□	
Waterproof push-button board IP 65	□	
Car Presence Sensor	□	
Non standard colour*	□	
1 fixed handrail protection without grid H=1200 mm.(each meter)*	□	
Hot Galvanisation	□	Columns, guides, tie rods, profiles runways, cross braces



Engineered & Manufactured in Europe



Designed for Australian site conditions

COMPLIANCE DATA

DOUBLE SPACER SYSTEMS CONFORM TO

- AS 3000
- AS Part 1601
- ISO 9001
- AS 60204
- AS1217.1
- EN14010

Please note: Dimensions and drawings within this technical specification are to be used as a guide only. Consultation with HLS Equipment is required for all projects.



Product of

For enquiries please contact us at info@hlsequipment.com